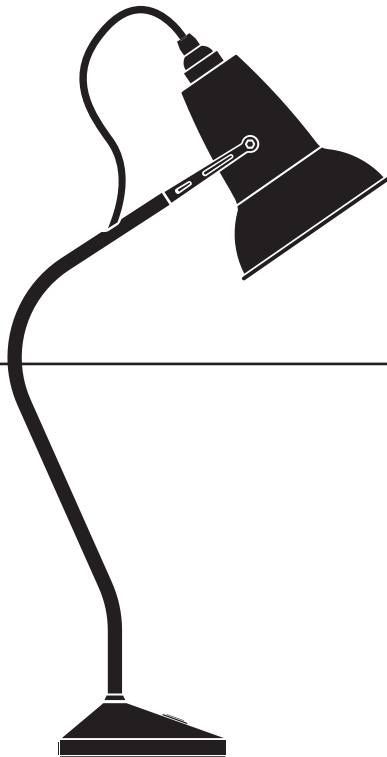


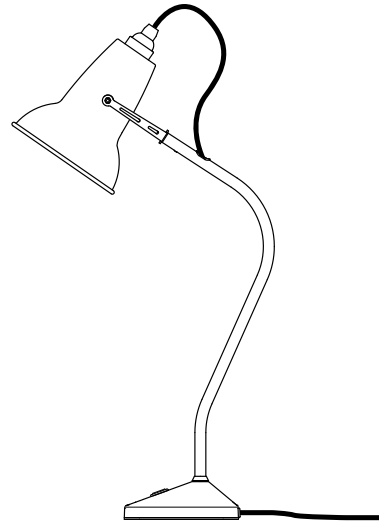
ANGLEPOISE®

Original 1227™ | Designed by George Carwardine



Original 1227™ Mini
Table Lamp

Original 1227™ Mini Table Lamp

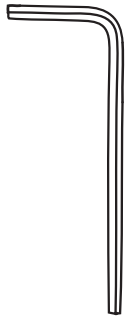


ASSEMBLY PARTS AND TOOLS:

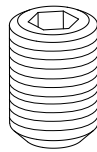
Your Anglepoise® comes supplied with everything you need to assemble and install your product. The assembly parts and tools you'll find in the box are:



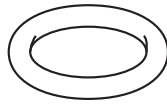
1x 100115
Anglepoise
Spanner



1x 100216
Allen Key



1x 100087
M3 Grub Screw
(Spare)



2x 100130
Rubber O-Ring
(Spare)

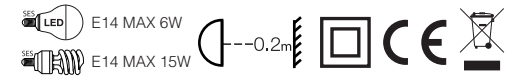
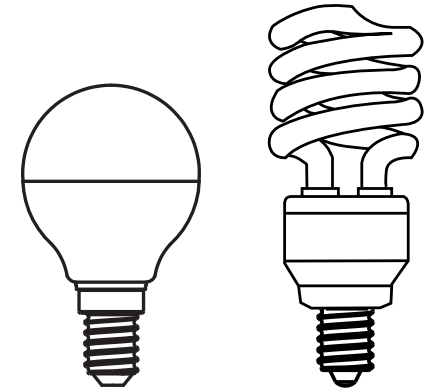
PARTS NOT TO SCALE

BULB INFORMATION:

We recommend using either an E14 CFL or E14 LED bulb in your product with a colour temperature of 2700K. This colour temperature is suitable for most applications.

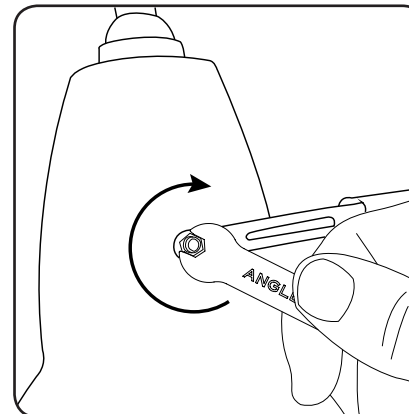
If you require a different light output you can use an alternative bulb.

Important: Do not use a bulb which exceeds the maximum wattage indicated inside the shade.

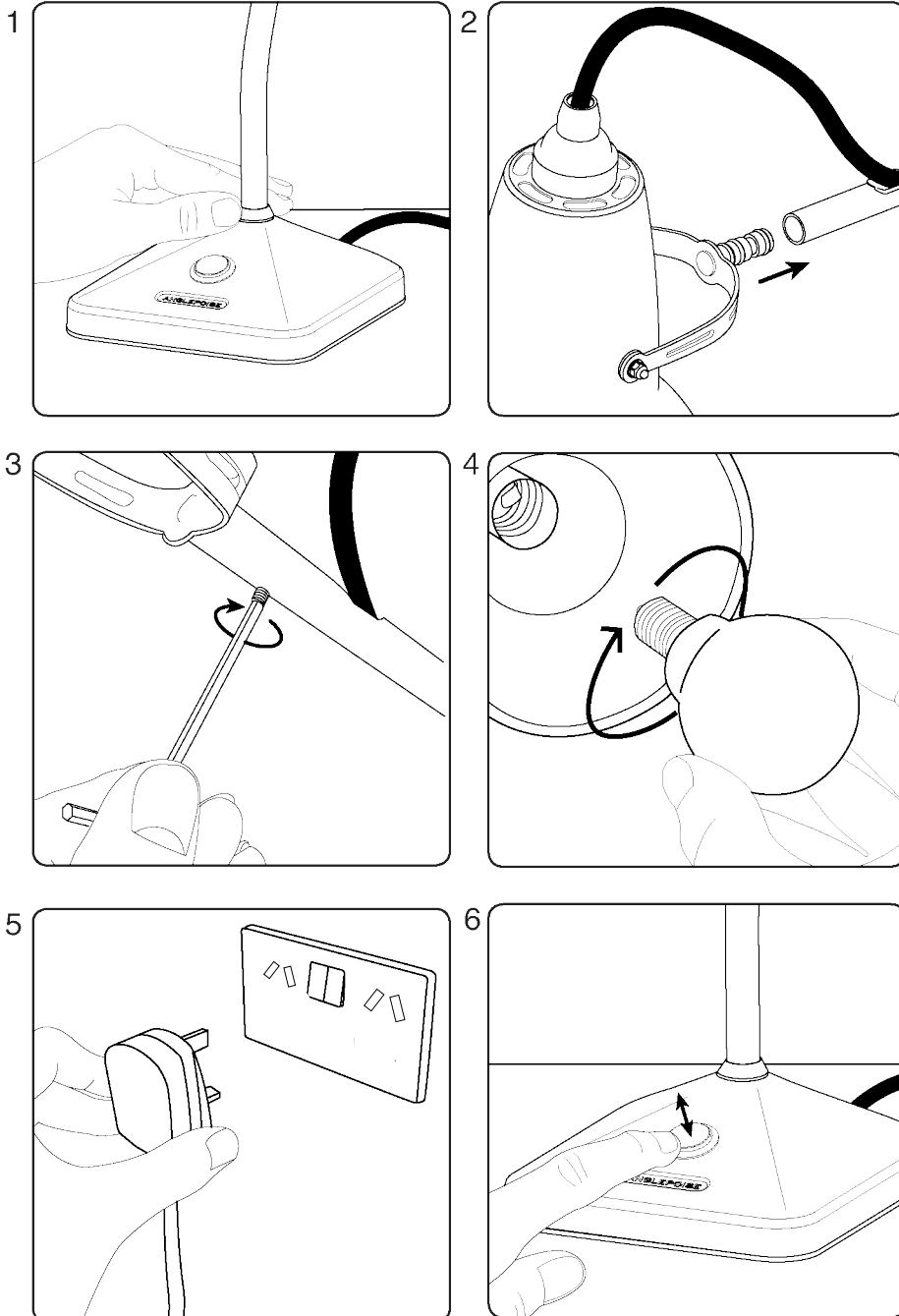


ADJUSTMENT:

If the shade becomes loose over time, use the Anglepoise® Spanner provided to tighten the shade nuts. Tighten until the shade is able to hold itself in all positions.



INSTALLATION:



INSTRUCTIONS:

1. Remove product from the packaging and place onto a flat even surface.
2. Loosen the Grub Screw (100087) and insert the shade assembly carefully into the tube to avoid damage of the rubber spacers. Twist left and right to help during insertion.
3. Tighten the Grub Screw (100087). Do not over-tighten as this may limit the rotation of the shade assembly.
4. Screw in a bulb. (See options for recommended bulb types)
5. Plug the product in.
6. Use the push switch to turn the product on/off.

ADJUSTMENT

If necessary, carefully tighten the nuts using the supplied spanner until the shade supports itself in any position. To avoid damage caused by excessive force, please take care with the movement range and characteristics of your product. It is also advisable to allow the shade to cool before adjustment or repositioning.

MAINTENANCE

Prior to cleaning or maintenance, always switch off and disconnect from the electricity supply and allow the shade to cool.

Repairs and the replacement of damaged cables or electrical parts should only be carried out by a qualified electrician, an authorised distributor or by Anglepoise® Ltd.

Your product should only be used in a dry indoor environment.

It is essential that any replacement bulb does not exceed the maximum wattage indicated inside the shade.

QUALITY AND SAFETY

This product is marked to demonstrate conformity with relevant directories. The minimum operating distance from illuminated objects and surfaces is 0.2m. Rated Voltage 220V-240V AC / 50-60Hz.